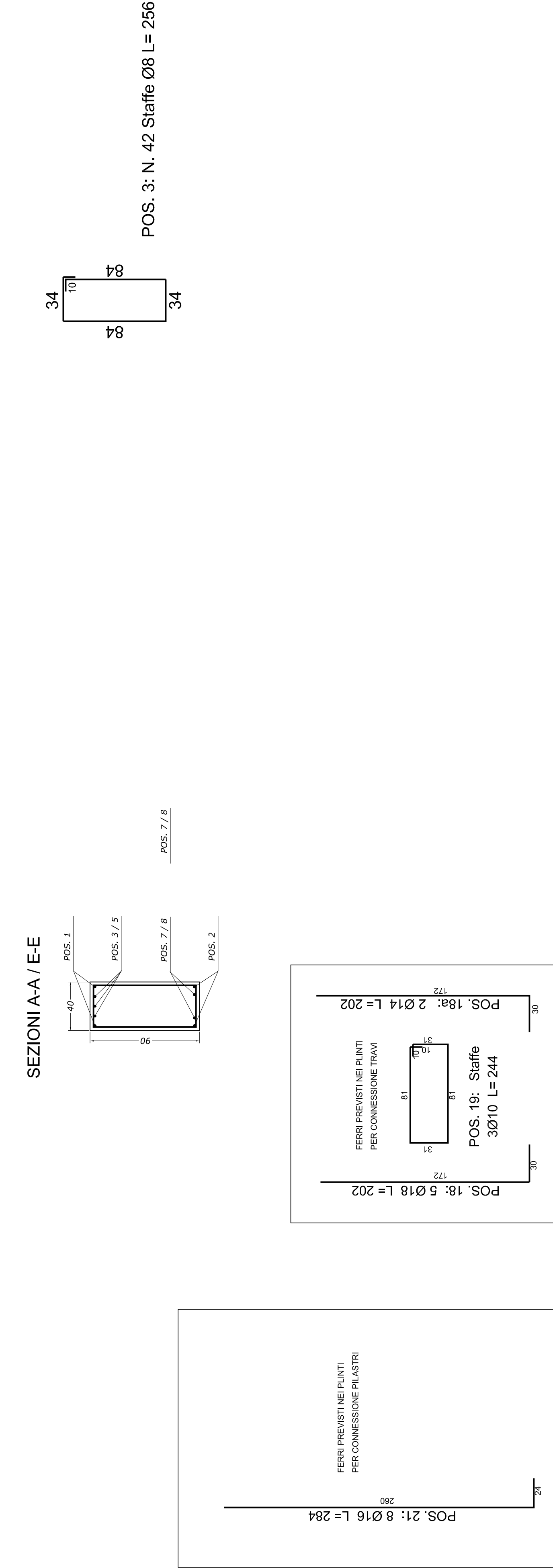
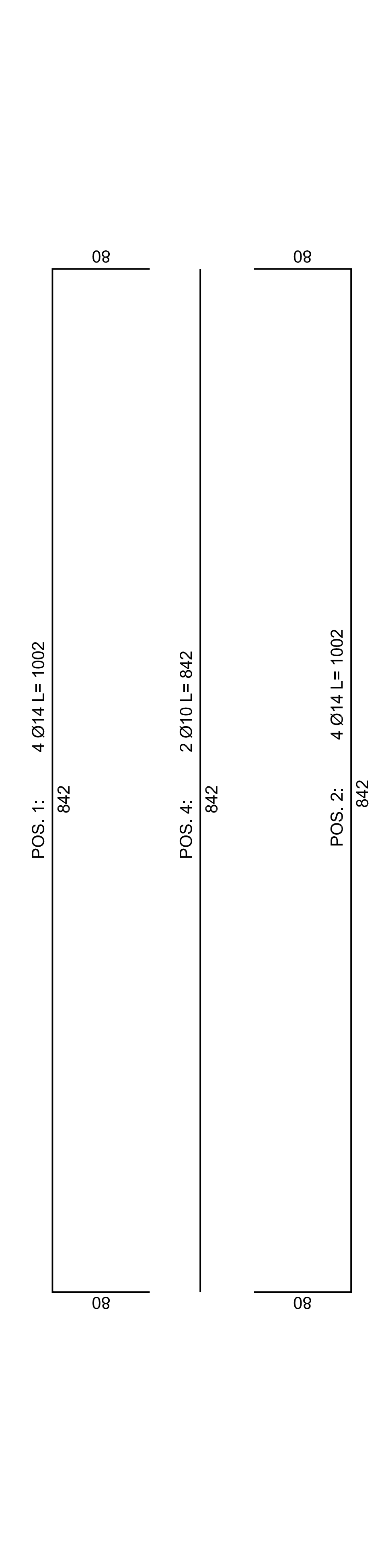
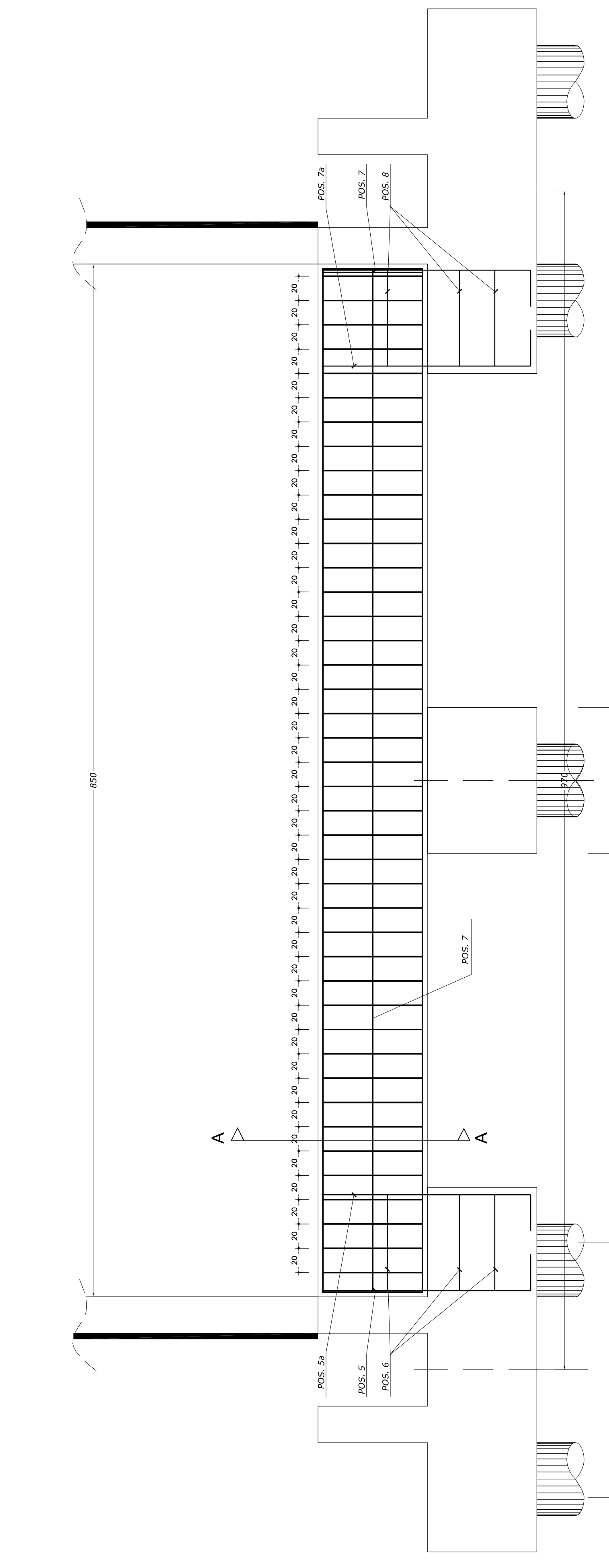
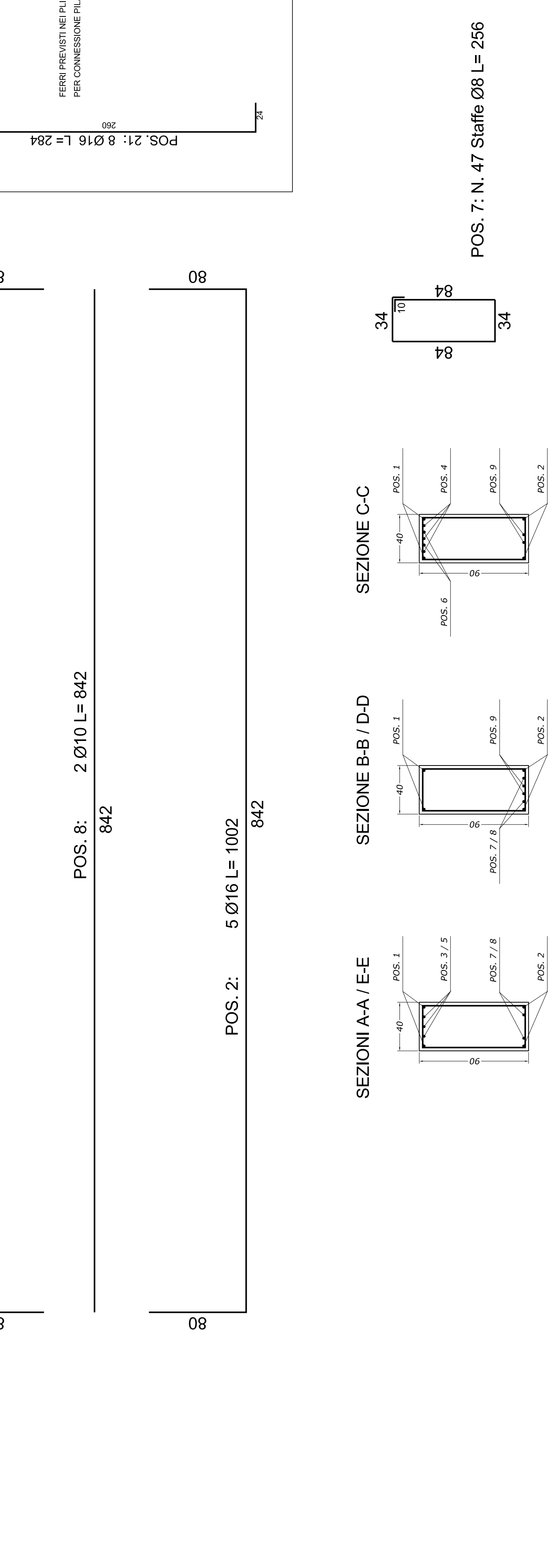
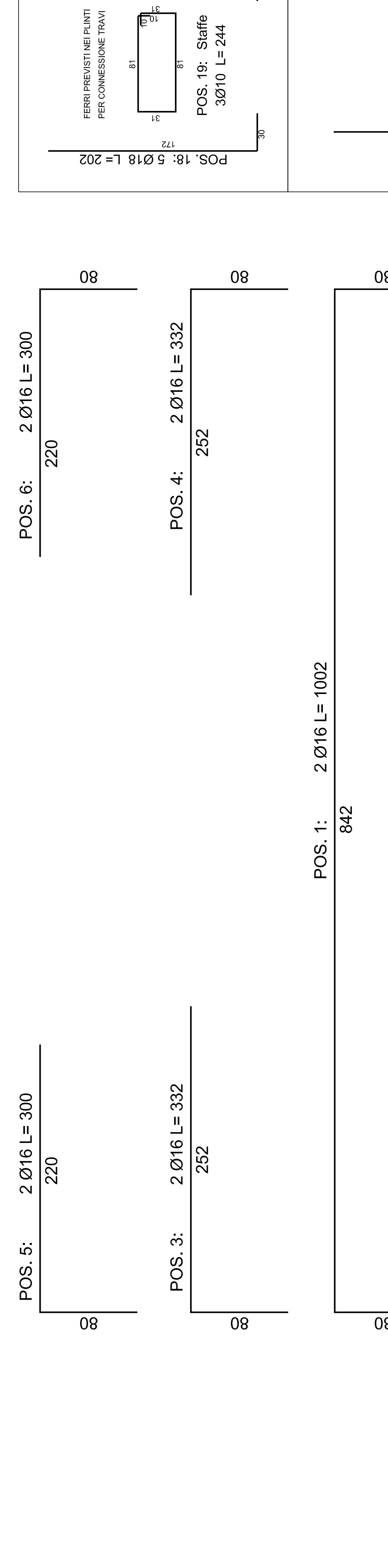
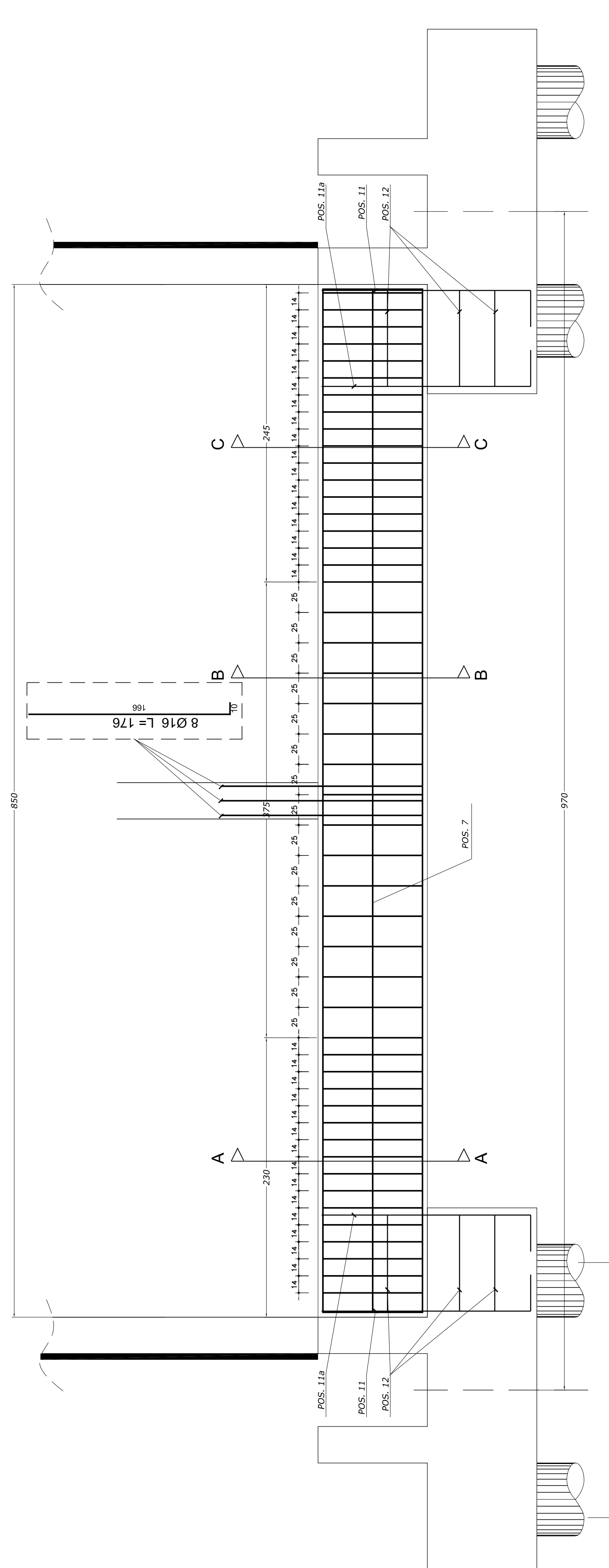


TRAVI PM Tipo 2Y (Nodi: B2 - C2 / B3 - C3 / B4 - C4 / B5 - C5 / B6 - C6) NUMERO TRAVI: 5



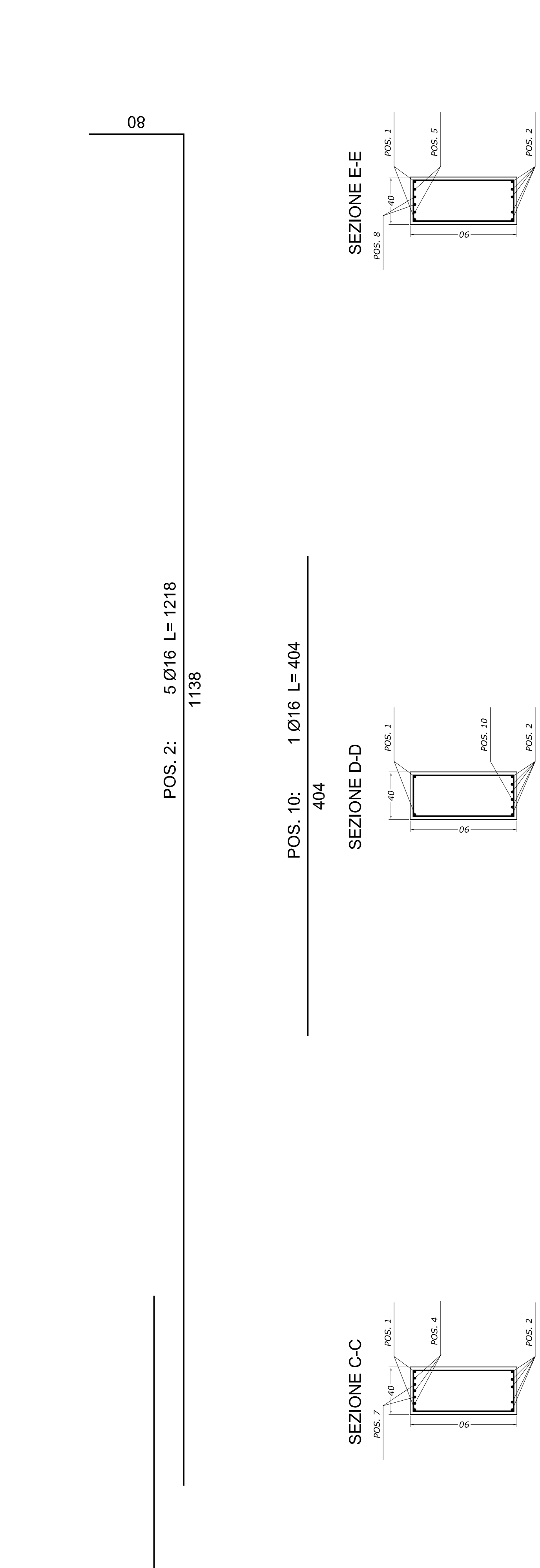
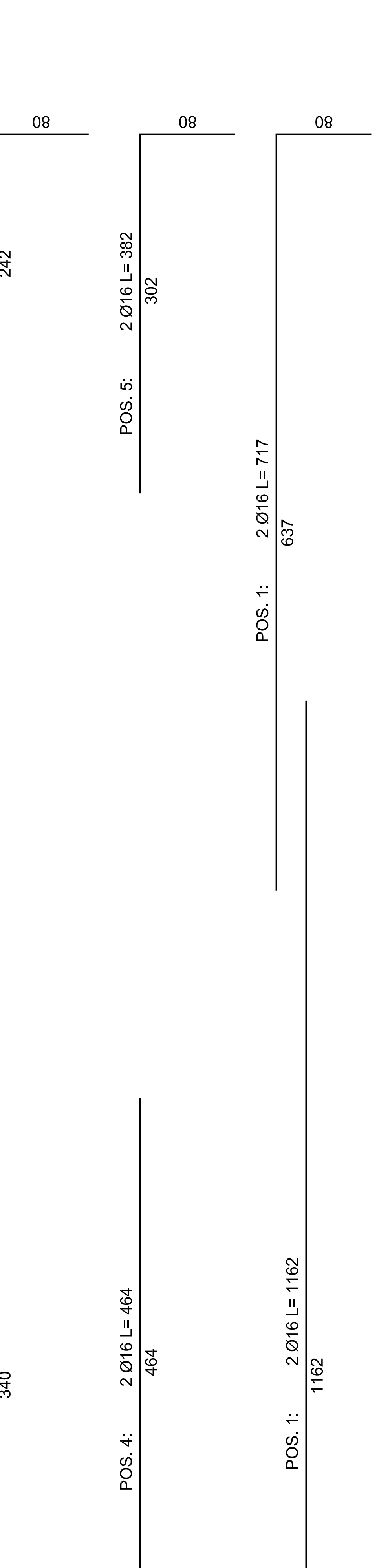
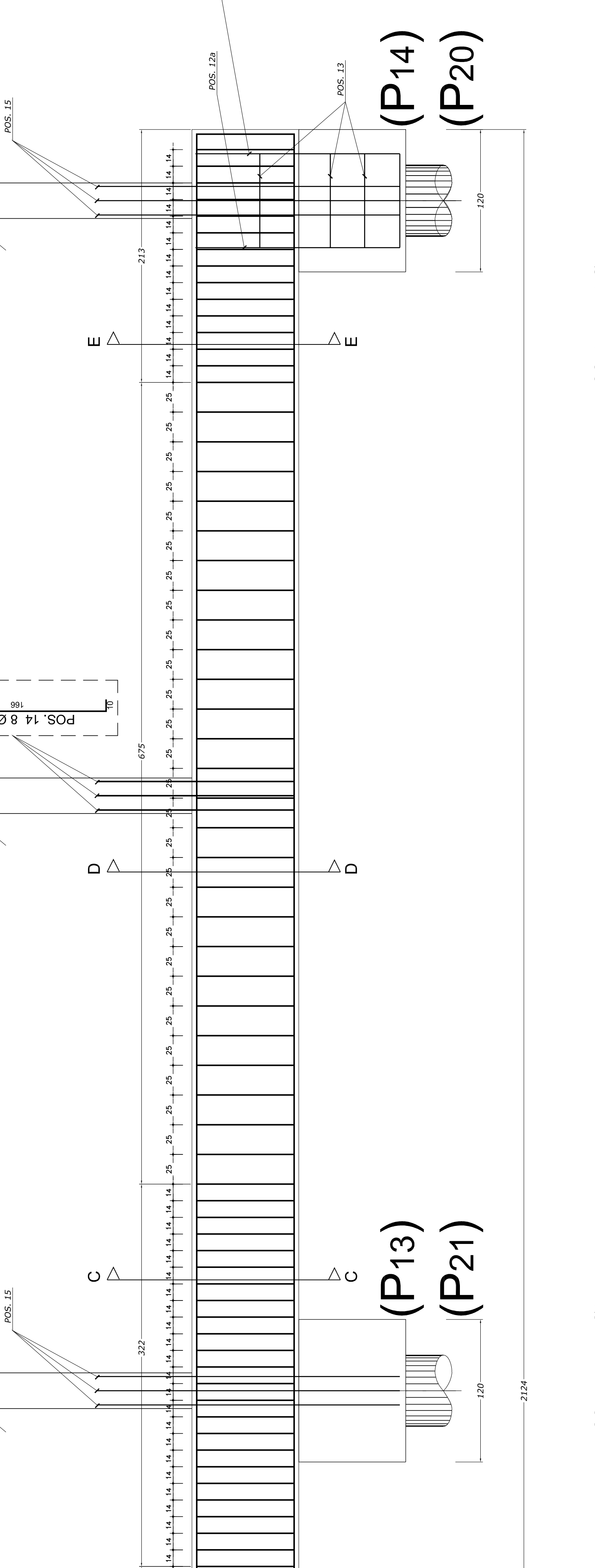
SCALA 1:25

TRAVI PM Tipo 1Y (Nodi: A2 - B2 / A3 - B3 / A4 - B4 / A5 - B5 / A6 - B6 C2 - D2 / C3 - D3 / C4 - D4 / C5 - D5 / C6 - D6) NUMERO TRAVI: 10



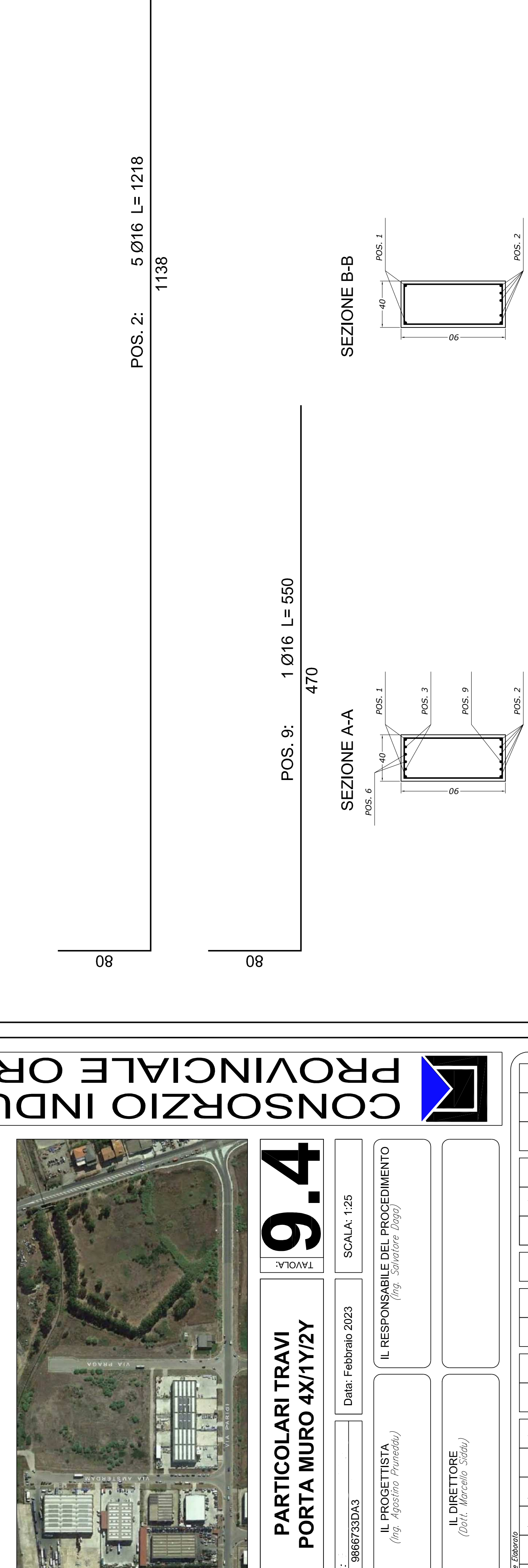
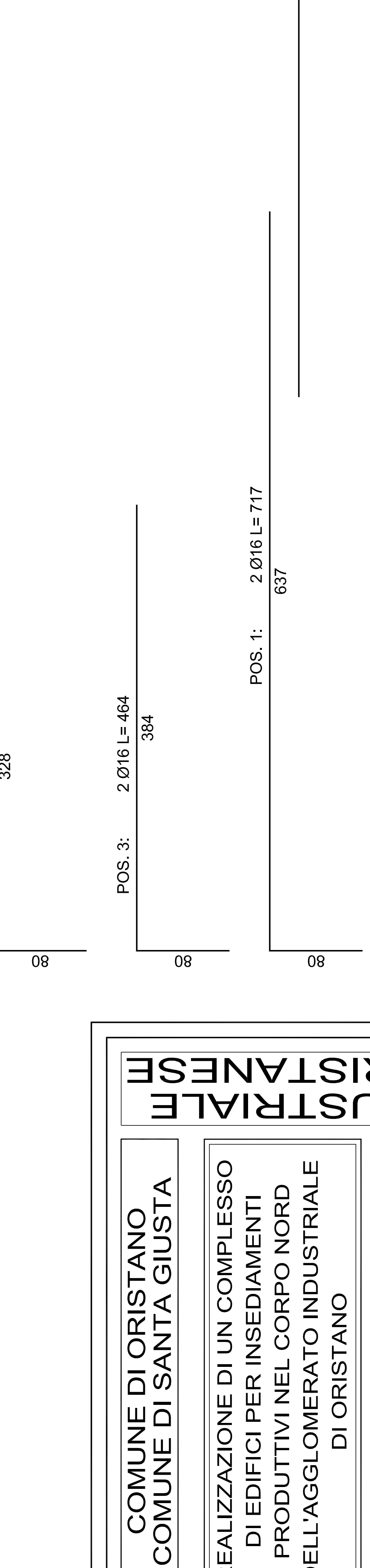
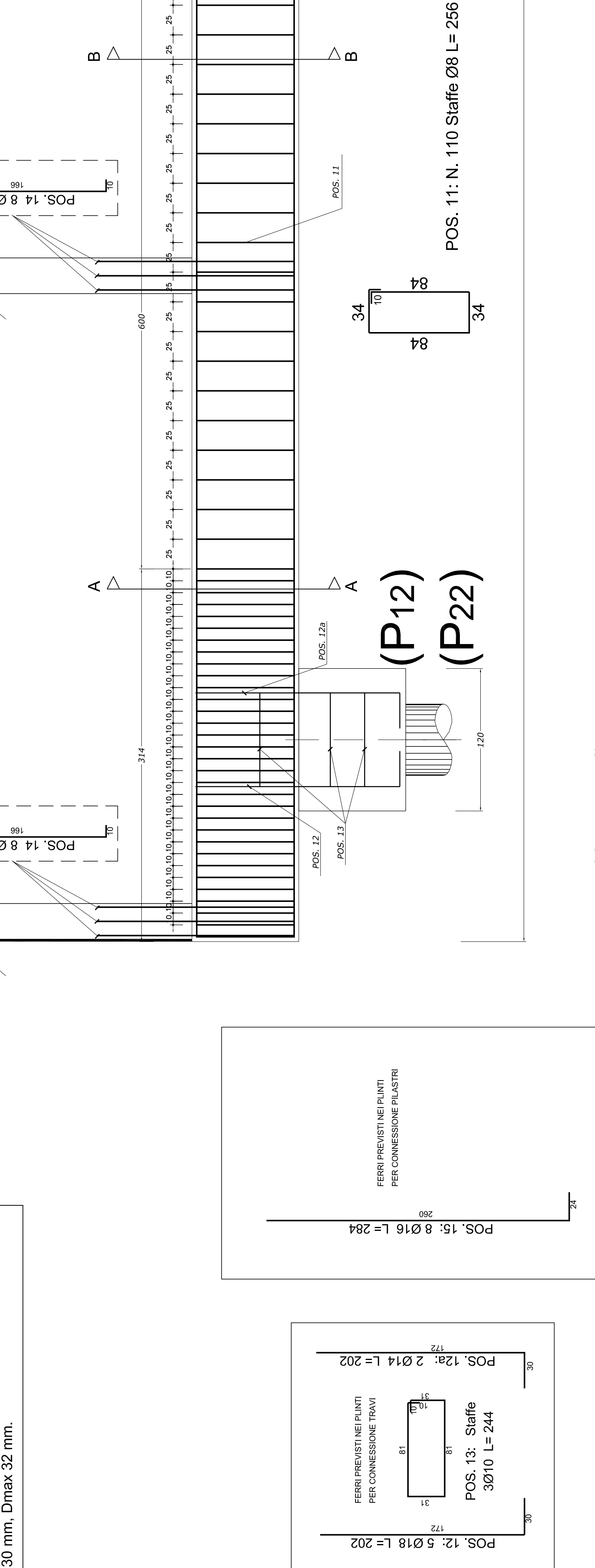
SCALA 1:25

TRAVI PM Tipo 4X (Nodi: P12 - P13 - P14 / P22 - P21 - P20) NUMERO TRAVI: 2



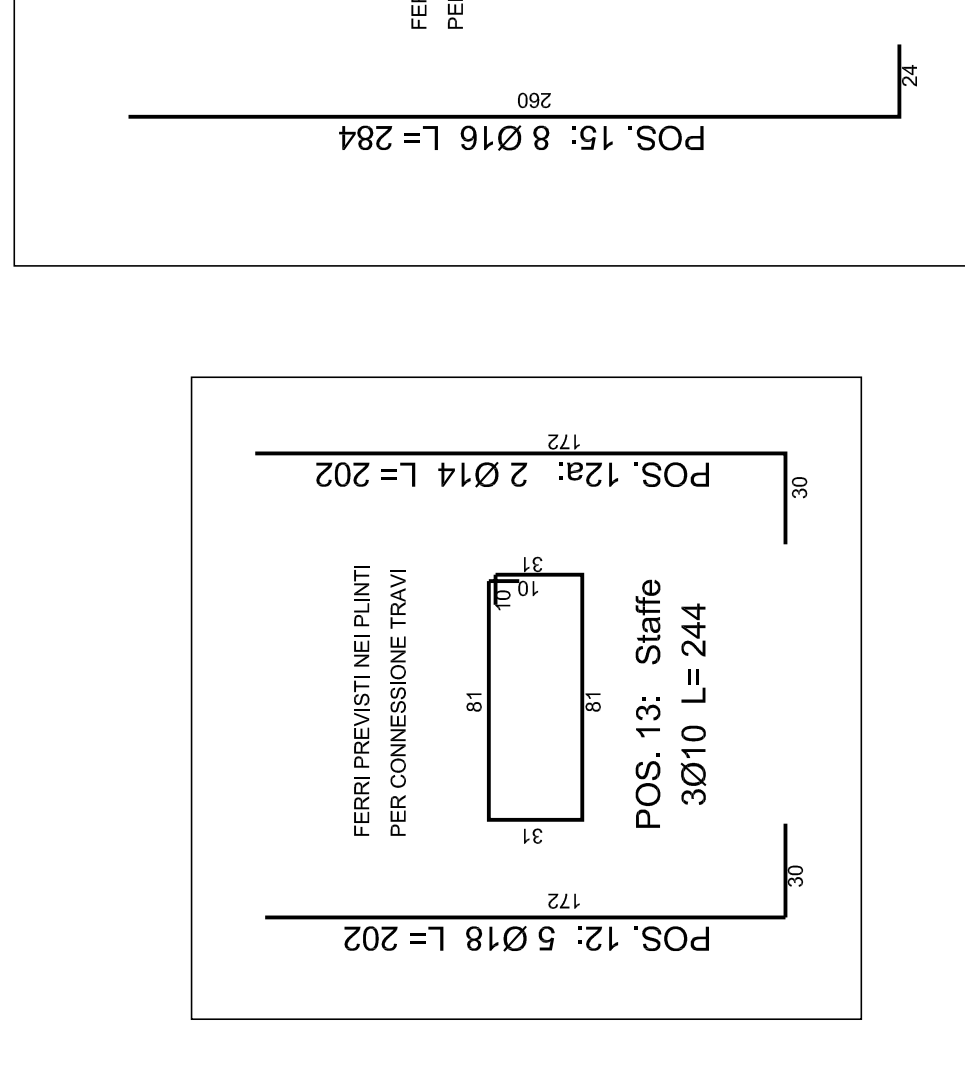
SCALA 1:25

TRAVI PM Tipo 4X (Nodi: P12 - P13 - P14 / P22 - P21 - P20) NUMERO TRAVI: 2



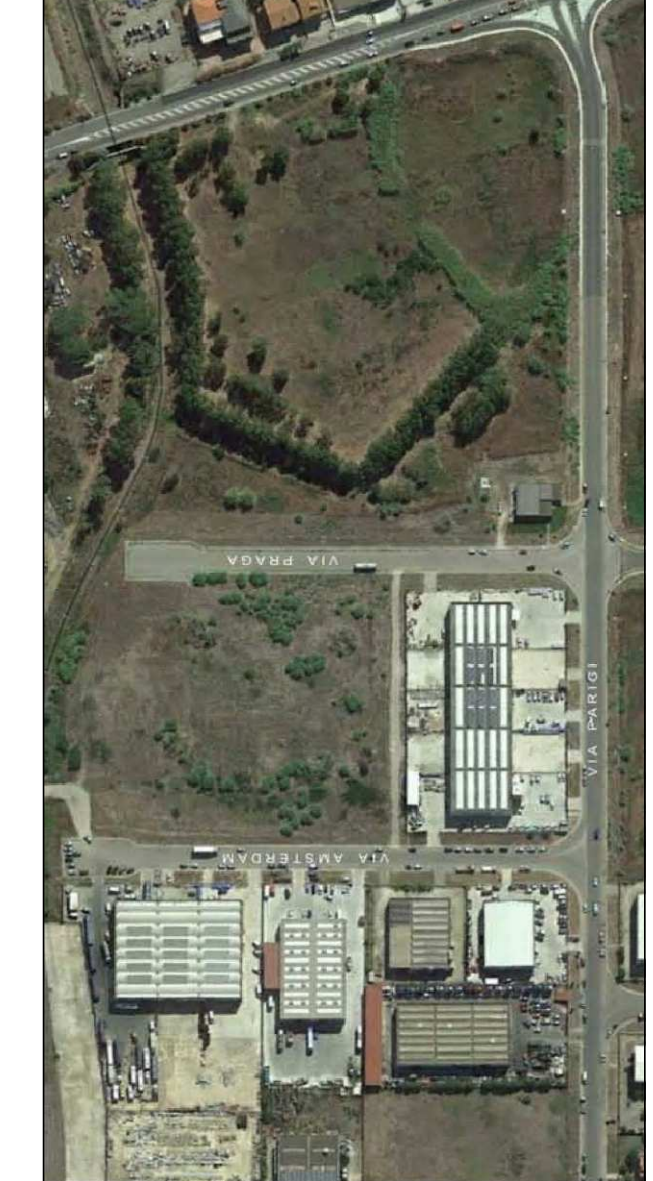
SCALA 1:25

Calcestruzzo Rck 30 N/mm² per strutture di fondazione, in classe di esposizione XC2 (UNI EN 12607) e per il resto dell'opera in classe di esposizione XS3 o al massimo di XF3 (UNI EN 12607) con spessore di riferimento 230 mm ± 30 mm. Dmax 32 mm.



COMUNE DI ORISTANO
COMUNE DI SANTA GIUSTA

REALIZZAZIONE DI UN COMPLESSO DI EDIFICI PER INSEDIAMENTI PRODUTTIVI NEL CORPO NORD DELL'AGGLOMERATO INDUSTRIALE DI ORISTANO



9.4
PARTICOLARI TRAVI
PORTA MURO AX1Y2Z

IL PROGETTISTA
IL RESPONSABILE DEL PROCEDIMENTO
IL MANUTENTORE

PCNNI01E02G017R00

CONSORZIO INDUSTRIALE PROVINCIALE ORISTANESE